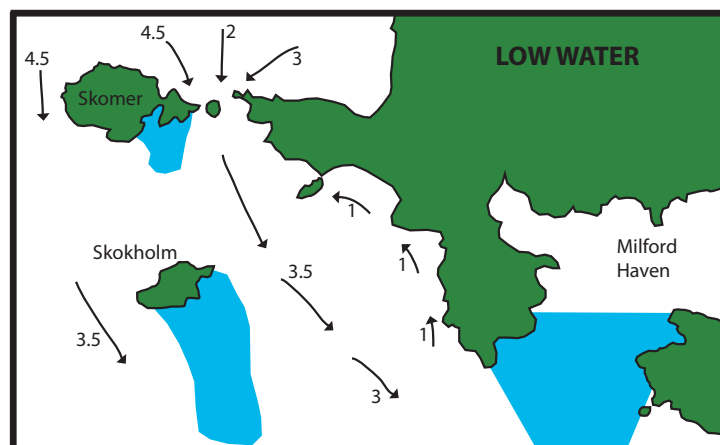
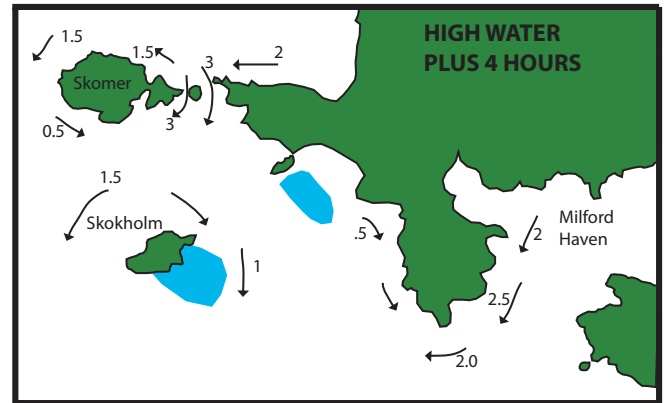
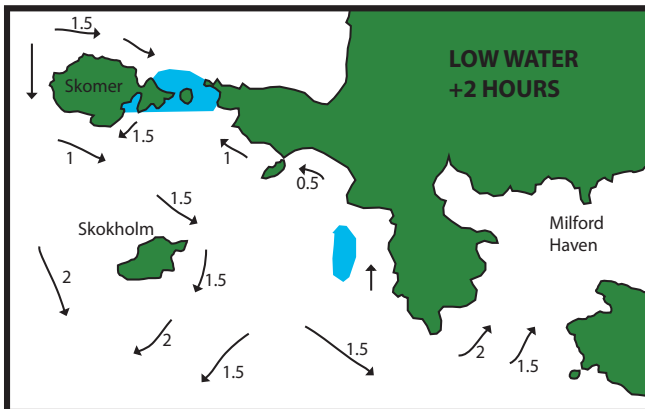
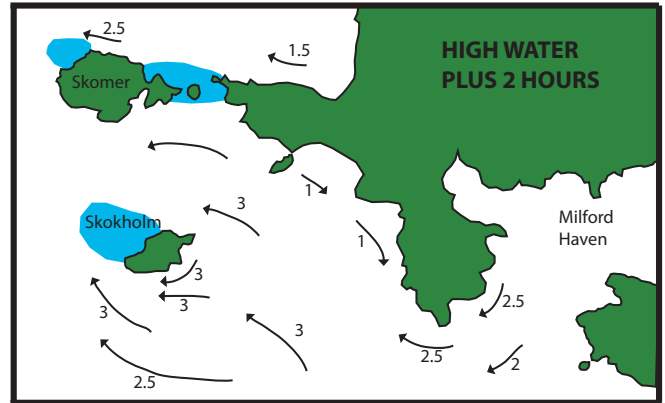
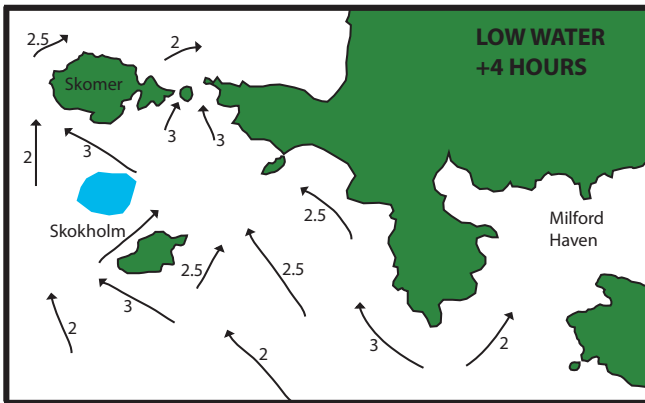
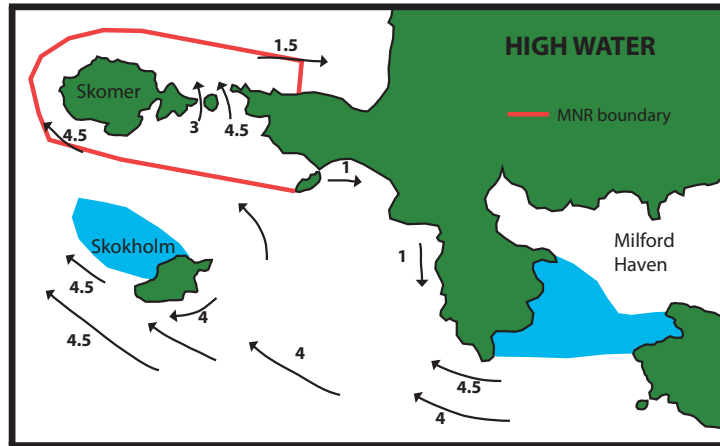


## Broad Sound Area - Tidal Atlas

Caution - *caveat emptor* - this is an approximation and all tides are different.  
Based on tide times for Milford Haven. Blue areas indicate possible slacks.



## **Useful Information**

### **Numbers**

Milford Haven Coastguard: VHF Channel 16 (or 84). Telephone 01646 690909.

Ship to Ship Channels: 6, 8, 72, 77 and small ship related 67.

Milford Haven Port Control Channel: 12 (but they also monitor 11, 14 and 16).

Berthing channels for oil terminals are 9 and 15 (so don't use those either!).

Milford Pierhead: Channel 14, and Milford Marina: Channel 37.

Castlemartin Firing Range: Channel 14 or telephone 01646 662367, or 01646 661321 xtn 4336.

### **Slips etc**

Goodwick slip at Fishguard is useable 1½hrs either side of HW, Fishguard tide is about 1hr 30mins after Milford Haven.

Gelliswick is useable at all states of tide but there is extensive shallow water at low tide and beware potholes in the sand at low tides. 4WD required off the concrete slip. Free.

St Bride's Haven is possible for the narrower orange boat but needs 4WD to launch. Free.

Little Haven and Broad Haven can have soft sand and shallow water a long way out, making launching difficult and requiring a 4wd or tractor. Launching fee should be paid at Little Haven.

Porthclais requires £5 launching fee and 4wd. On low tides the water goes out beyond the break-water where it is not possible to get a trailer.

### **Diving**

The marine nature reserve (MNR) around Skomer is a no take zone for all species.

The Wick on the west side of Skomer can only be dived during August (between birds leaving and seals breeding).

Ramsey Sound and Jack Sound both have slack water about 2½hrs after low and high water at Milford Haven. Tides in the various sounds are 6kt on springs - only dive the sounds on slacks!

Slack water at 'The Lucy' should occur between about 1½ and 3½ hrs after HW Milford and then again between about 1 and 3½ hrs after LW Milford.

Obtain range officers permission before diving off Castlemartin